



||| D-TOWN |||

Link —>

The Epicenter of Lifestyle and Convenience

Welcome to

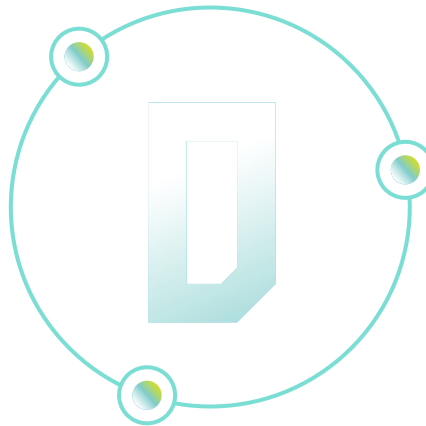
D-TOWN

A collaborative community for tech and creative talents, connecting Singapore and Indonesia's digital economies.

Developed by PT. Citra Sinar Global, a joint venture between Citramas Group & Sinar Mas Land, and designed by award-winning Surbana Jurong, Nongsa D-Town is the embodiment of urban living integrated with nature and designed for the digital and creative economies in mind.

"D" is for "Downtown" a vibrant ecosystem where diversity of people and ideas converge to spark creativity. And as the Downtown of the Nongsa area, Nongsa D-Town will be the core commercial and developments within the Citramas and Sinarmas masterplans in Nongsa and business district that supports the various resorts.

Downtown



Digital Economy

"D" is also for "Digital Economy" - evolving out of Nongsa Digital Park launched in 2018, Nongsa D-Town is developed to further expand and solidify Nongsa as an ecosystem where digital nomads, techpreneurs, and tech companies big and small can accelerate, collaborate, and innovate. It is where tech and creative talents can work, live, and play. Nongsa D-Town is a Digital Downtown where the digital economy can flourish.

Digital Bridge

Unique to Nongsa D-Town, "D" also represents "Digital Bridge".

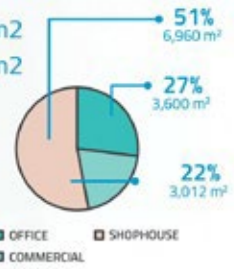
Given its strategic location, Batam is committed from the president of the Republic of Indonesia, Jokowi with the Prime Minister of Singapore, Lee Hsien Loong to build a "Digital Bridge" that connects the digital economies of Singapore, Indonesia, and the rest of the world. Just 40 minutes by ferry from Singapore, and connected to Singapore and other key tech hubs around the world with fast cable connectivity, operating globally from Nongsa becomes easy and convenient.



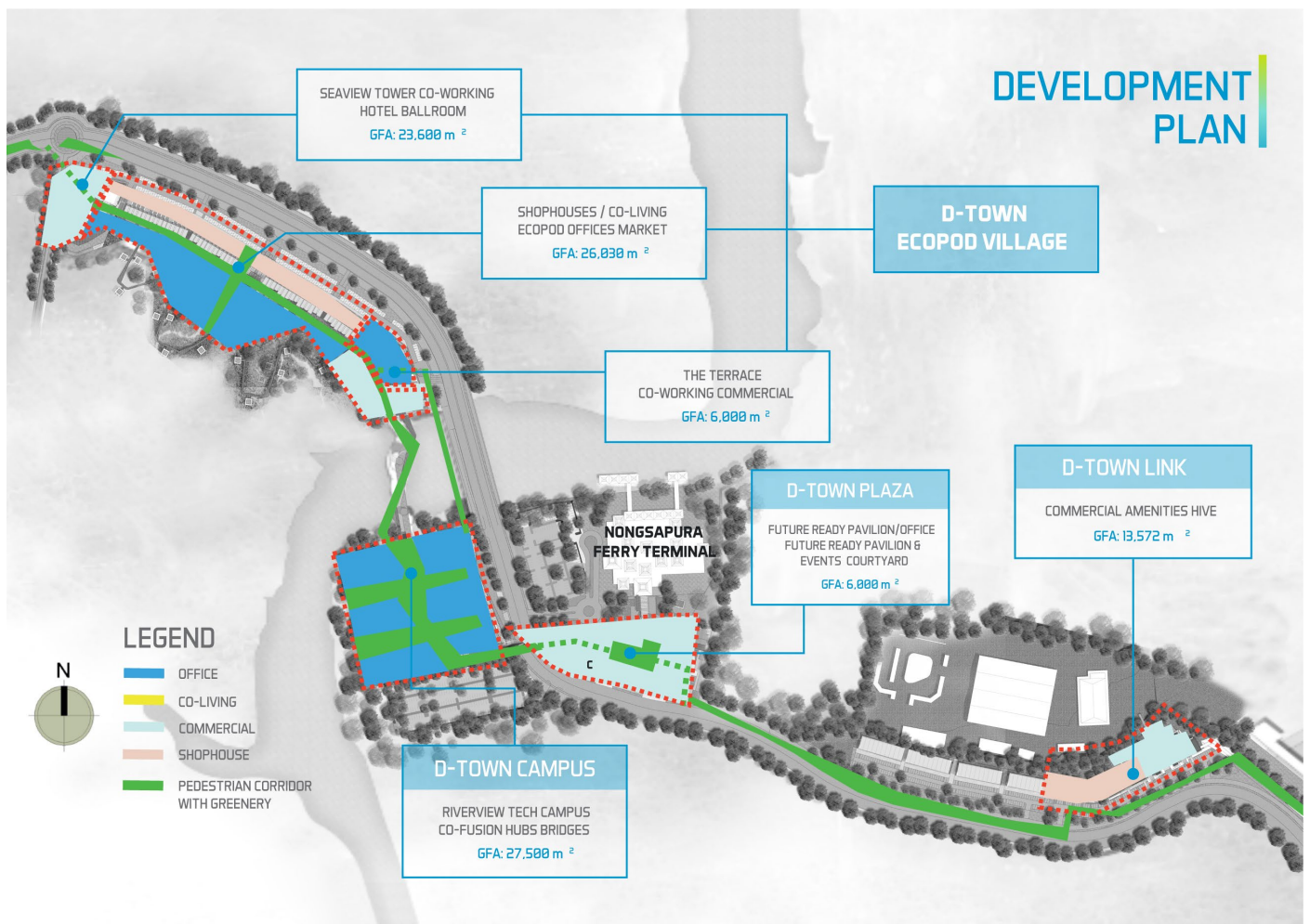
D-Town Link

Total land area : 10,556 m²
 Proposed GFA : 13,572 m²
 Gross FAR : 1.29

1. Link Bridge to Infinite Studio
2. Covered Linkway
3. Commercial Amenities Hive
4. Office
5. Shophouses



Development Plan



||| D-TOWN |||

Link →

The Epicenter of Lifestyle and Convenience



Communal Space Of Amenities Hive



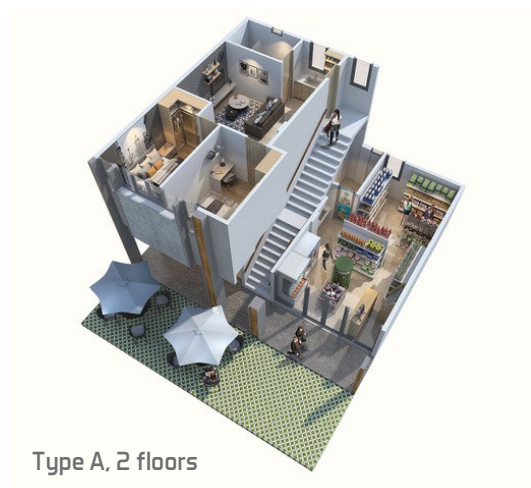
D-Town Link

D-Town Link is the place for the Nongsa D-Town community to connect. An open air courtyard provides a space to socialize while enjoying some fresh air whereas a variety of F&B options and cafes provide ideal spots to hang out or to take a break from a busy day. An assortment of retail shops cater to the everyday needs of the Nongsa D-Town community and beyond, integrated with various amenities and facilities that also support a range of lifestyles.

Bringing the “live, work, and play” concept to reality, D-Town Link will also incorporate some co-living units for a convenient and integrated working and living environment.

All in all, D-Town Link is vibrant, social, and convenient.

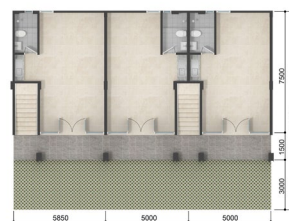
Live, Work, Play ...



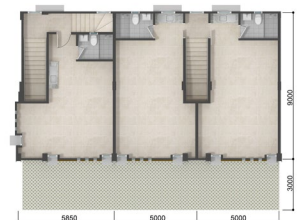
Type A, 2 floors



Type B, C, 3 floors



Ground Floor Plan



1st Floor Plan



2nd Floor Plan



PT. Citra Sinar Global

Nongsa Digital Park

Hang Lekiu KM 2

Teluk Mata Ikan

Nongsa - Batam

29465

☎ : (+62) 778 - 7100673

🌐 : nongsa-dtown.com

✉ : info@nongsa-dtown.com

📺 : Nongsa D-Town

📷 : @nongsa.dtown

📘 : Nongsa DTown

in : Nongsa D-Town

Developed by



Joint-Venture of



Disclaimer: While every reasonable care has been taken in preparing this brochure, specification, constructing the sales models and sales gallery/show at (the "Materials"), the Developer and its agent and their respective servants and contractors do not warrant the accuracy of any of the Materials and the actual unit when built. The Developer shall not be bound by any statement, representation or promise (written or oral) by its agent & contractors. All statements and depictions are believed to be correct but are not to be regarded as statements or representations of fact. The Sale and Purchase Agreement shall form the entire agreement between the Developer and the Purchase and shall supersede all statements, representations or promises made prior to the signing of the Sale and Purchase Agreement. All information, specifications, layout plans, building plans, location of facilities, finishes and appliance selection and authority and may be changed without notice. The Materials are not intended to be contractual documents and shall not form part of any offer of contract. Visuals, renderings, illustrations, models, slowflat displays and photography are artist's impressions only and none can be regarded as representative of fact. Floor areas are approximate measurements only and not to scale. It is subject to final survey. The property is to inspection by the relevant